



**Type 360 Series
Models 360, 361, 362
Explosion-Proof
Pressure Switches**



IM360 Series-01

**UNITED ELECTRIC
CONTROLS
Installation and Maintenance
Instructions**

Please read all instructional literature carefully and thoroughly before starting. Refer to the final page for the listing of Recommended Practices, Liabilities and Warranties.

GENERAL

BEFORE INSTALLING, CHECK THE SENSOR MODEL SELECTED FOR COMPATIBILITY TO THE PROCESS MEDIA IN CONTACT WITH THE SENSOR AND WETTED PARTS.

MISUSE OF THIS PRODUCT MAY CAUSE EXPLOSION AND PERSONAL INJURY. THESE INSTRUCTIONS MUST BE THOROUGHLY READ AND UNDERSTOOD BEFORE UNIT IS INSTALLED.

UL THIS EQUIPMENT IS SUITABLE FOR USE IN CLASS I, DIVISIONS 1 & 2, GROUPS A, B, C AND D; CLASS II, DIVISIONS 1 & 2, GROUPS E, F AND G; CLASS III; OR NON-HAZARDOUS LOCATIONS ONLY. -50 °C (-58 °F) ≤ Tamb. ≤ 95 °C (203 °F), ENCLOSURE TYPE 4X.

THIS EQUIPMENT IS ATEX CERTIFIED FOR EQUIPMENT CATEGORY 2. SUITABLE FOR APPROPRIATE USE IN GAS ZONE 1 AND DUST ZONE 21 APPLICATIONS.

CE 0539 DEMKO 04 ATEX 0334782X

II 2 G EEx d IIC T6

II 2 D T+85 °C
-50 °C ≤ Tamb. ≤ +80 °C, IP66

The 360 Series pressure switch utilizes a diaphragm or piston sensor to detect a pressure change. The response, at a predetermined set point actuates an SPDT or DPDT snap-acting switch, converting a pressure signal into an electrical signal. Set point may be adjusted by turning the adjustment mechanism according to procedures outlined in Part II – Adjustments.

PROOF PRESSURE* LIMITS STATED IN THE LITERATURE AND ON NAMEPLATES MUST NEVER BE EXCEEDED, EVEN BY SURGES IN THE SYSTEM. OCCASIONAL OPERATION OF UNIT UP TO MAXIMUM PRESSURE IS ACCEPTABLE (E.G., START-UP, TESTING). CONTINUOUS OPERATION SHOULD NOT EXCEED THE DESIGNATED OVER RANGE PRESSURE.

***Proof Pressure**

The maximum pressure to which a pressure sensor may be occasionally subjected, which causes no permanent damage (e.g., start-up testing). The units may require re-calibration.

THESE PRODUCTS DO NOT HAVE ANY FIELD REPLACEABLE PARTS. ANY SUBSTITUTION OF COMPONENTS MAY IMPAIR SUITABILITY FOR CLASS I, DIVISION 1.

THE EPOXY RESIN SHALL NOT BE SUBJECTED TO A TEMPERATURE GREATER THAN 125°C.

MOUNTING

ALWAYS LOCATE UNITS WHERE SHOCK, VIBRATION AND AMBIENT TEMPERATURE FLUCTUATIONS ARE MINIMAL. DO NOT MOUNT IN AMBIENT TEMPERATURE AREAS EXCEEDING 203°F (IF UL/cUL APPROVAL IS APPLICABLE) OR 180 °F (IF ATEX APPROVAL IS APPLICABLE). IF SEVERE PRESSURE SURGES ARE EXPECTED, CONSIDER THE USE OF A PRESSURE SNUBBER.

MOUNT USING PRESSURE CONNECTION: ALWAYS USE A WRENCH ON PRESSURE CONNECTION WRENCH FLAT. (SEE FIGURE 1).

UNIT MAY BE MOUNTED IN ANY POSITION. IF UNIT IS TO BE SET AFTER MOUNTING, VERIFY THAT ADJUSTMENT OPENING IS ACCESSIBLE TO THE OPERATOR.

1/2" NPT Male Electrical Connection

When panel mounting, mount through 7/8" clearance hole in panel. Hold in place with serrated 1/2" conduit nut. Always support the unit by holding a wrench on the hex.

WIRING

DISCONNECT ALL SUPPLY CIRCUITS BEFORE WIRING UNIT. ELECTRICAL RATINGS STATED IN LITERATURE AND ON NAMEPLATE MUST NOT BE EXCEEDED. OVERLOAD ON A SWITCH CAN CAUSE FAILURE ON THE FIRST CYCLE.

WIRE IN ACCORDANCE WITH LOCAL AND NATIONAL ELECTRICAL CODES. BY THE INSTALLATION, THE WIRES SHALL BE PROTECTED AGAINST MECHANICAL DAMAGE. E.G. BY USE OF A CONDUIT.

DIN CONNECTOR (OPTION M515) IS NOT APPROVED FOR CLASS I, DIV. 1 HAZARDOUS LOCATIONS/FLAMEPROOF ATMOSPHERES.

THE WIRING TO THE PRESSURE SWITCH MUST ONLY BE CONNECTED IN THE SAFE AREA OR BY AN APPROVED TERMINAL BOX CERTIFIED TO EN 50 018 OR EN 50 019 FOR HAZARDOUS LOCATIONS/FLAMEPROOF ATMOSPHERES.

1/2" NPT Male conduit connection is provided on top of the unit with 72" of color coded and marked 18 AWG lead wires. Unit is available with SPDT or DPDT output.

Terminals	SPDT	DPDT	
Common	Brown	Brown	Yellow
Normally Closed	Red	Red	Black
Normally Open	Blue	Blue	Violet
Ground	Green	Green	

DIN Connector with 4 Male Terminals (figure 3)

Wire in accordance with local and national electrical codes. Connector conforms to DIN 43650. Use a mating DIN connector (female type). Coding:

Terminals	Common
Terminal #1	Normally Closed
Terminal #2	Normally Open
Terminal #3	Ground



Part I - Installation

Tools Needed

3/4 - 1" Open end adjustable wrench

Part II - Adjustments

Tools Needed

Flathead screwdriver

1. Connect control to pressure source.
2. Loosen screws on front, removing cover. (See figure 1)
3. Connect power to leads.
4. With the aid of a screwdriver, turn adjustment wheel left (clockwise) to increase setting, or right (counter clock-wise) to decrease setting. (See figure 2).

For setting on RISE, apply desired pressure and turn adjustment left (clockwise) until switch clicks (circuit across N.O. and COM terminals closes).

For setting on FALL, apply pressure equal to normal system operating pressure. Reduce source pressure to setpoint value. Turn adjustment right (counter clockwise) until switch clicks (circuit across N.C. and COM terminals closes).

Dimensions

Standard Configuration

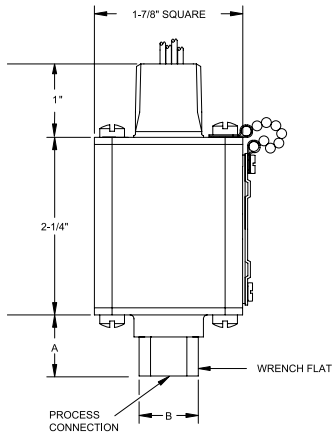


figure 1

Type	Process Connection	Dim A	Wrench Flat (Dim B)
360	1/4" NPT	9/16	3/4
360	1/2" NPT	1-1/16	1
361	1/4" NPT	1-1/8	3/4
361	1/2" NPT	1-1/2	1
361	SF-250-CX	1-1/8	15/16
362	1/4" NPT	1-1/16	3/4
362	1/2" NPT	1-1/2	1

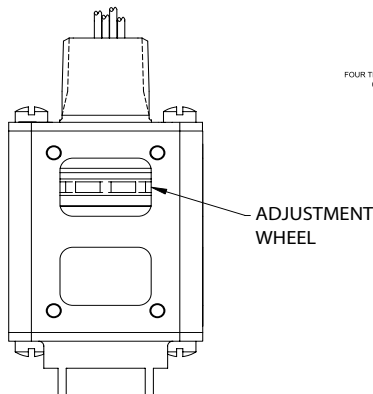


figure 2

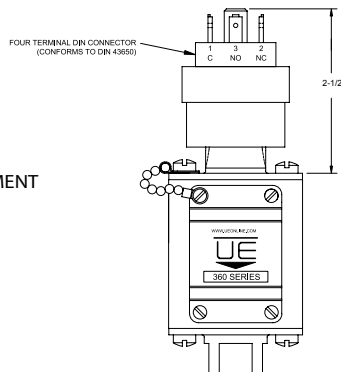
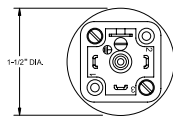


figure 3

RECOMMENDED PRACTICES AND WARNINGS

United Electric Controls Company recommends careful consideration of the following factors when specifying and installing UE pressure and temperature units. Before installing a unit, the Installation and Maintenance instructions provided with unit must be read and understood.

- To avoid damaging unit, proof pressure and maximum temperature limits stated in literature and on nameplates must never be exceeded, even by surges in the system. Operation of the unit up to maximum pressure or temperature is acceptable on a limited basis (e.g., start-up, testing) but continuous operation must be restricted to the designated adjustable range. Excessive cycling at maximum pressure or temperature limits could reduce sensor life.
- A back-up unit is necessary for applications where damage to a primary unit could endanger life, limb or property. A high or low limit switch is necessary for applications where a dangerous runaway condition could result.
- The adjustable range must be selected so that incorrect, inadvertent or malicious setting at any range point cannot result in an unsafe system condition.
- Install unit where shock, vibration and ambient temperature fluctuations will not damage unit or affect operation. Orient unit so that moisture does not enter the enclosure via the electrical connection. When appropriate, this entry point should be sealed to prevent moisture entry.
- Unit must not be altered or modified after shipment. Consult UE if modification is necessary.
- Monitor operation to observe warning signs of possible damage to unit, such as drift in set point or faulty display. Check unit immediately.
- Preventative maintenance and periodic testing is necessary for critical applications where damage could endanger property or personnel.
- For all applications, a factory set unit should be tested before use.
- Electrical ratings stated in literature and on nameplate must not be exceeded. Overload on a switch can cause damage, even on the first cycle. Wire unit according to local and national electrical codes, using wire size recommended in installation sheet.
- Do not mount unit in ambient temp. exceeding published limits.

LIMITED WARRANTY

Seller warrants that the product hereby purchased is, upon delivery, free from defects in material and workmanship and that any such product which is found to be defective in such workmanship or material will be repaired or replaced by Seller (Ex-works, Factory, Watertown, Massachusetts, INCOTERMS); provided, however, that this warranty applies only to equipment found to be so defective within a period of 36 months from the date of manufacture by the Seller. Seller shall not be obligated under this warranty for alleged defects which examination discloses are due to tampering, misuse, neglect, improper storage, and in any case where products are disassembled by anyone other than authorized Seller's representatives. EXCEPT FOR THE LIMITED WARRANTY OF REPAIR AND REPLACEMENT STATED ABOVE, SELLER DISCLAIMS ALL WARRANTIES WHATSOEVER WITH RESPECT TO THE PRODUCT, INCLUDING ALL IMPLIED WARRANTIES OF MERCHANTABILITY OR FITNESS FOR ANY PARTICULAR PURPOSE.

LIMITATION OF SELLER'S LIABILITY

Seller's liability to Buyer for any loss or claim, including liability incurred in connection with (i) breach of any warranty whatsoever, expressed or implied, (ii) a breach of contract, (iii) a negligent act or acts (or negligent failure to act) committed by Seller, or (iv) an act for which strict liability will be inputted to seller, is limited to the "limited warranty" of repair and/or replacement as so stated in our warranty of product. In no event shall the Seller be liable for any special, indirect, consequential or other damages of a like general nature, including, without limitation, loss of profits or production, or loss or expenses of any nature incurred by the buyer or any third party.

UE specifications subject to change without notice.



UNITED ELECTRIC CONTROLS
 180 Dexter Ave. P.O. Box 9143, Watertown, MA 02471
 Tel: 617/926-1000 Fax: 617/926-2568
<http://www.ueonline.com>